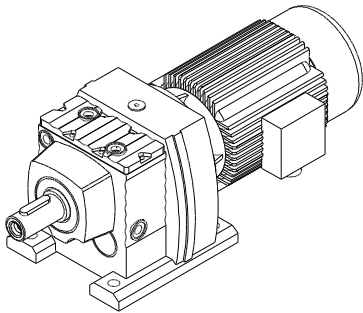


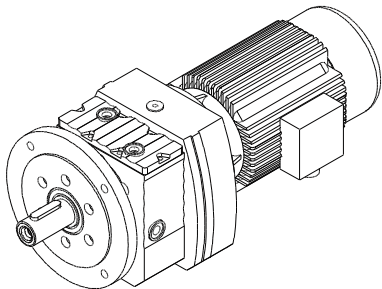


RG系列斜齿轮减速器  
RG series HelicalGear motor

RG



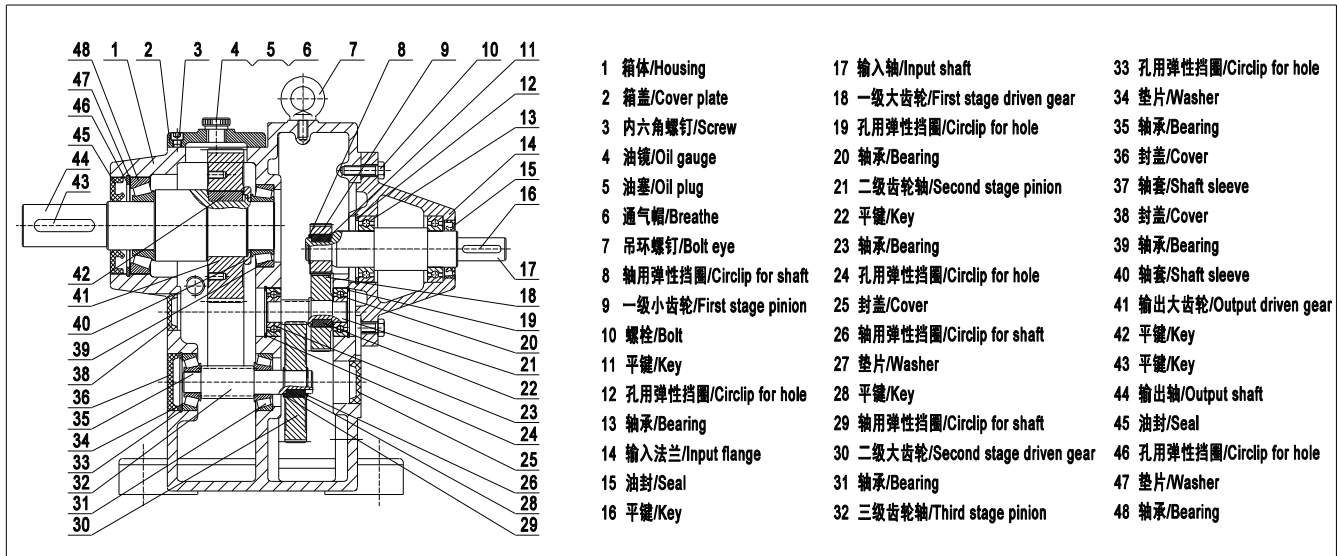
RGW..卧式底脚安装  
Horizontal foot mounted



RGL..立式法兰安装  
Vertical flange mounted



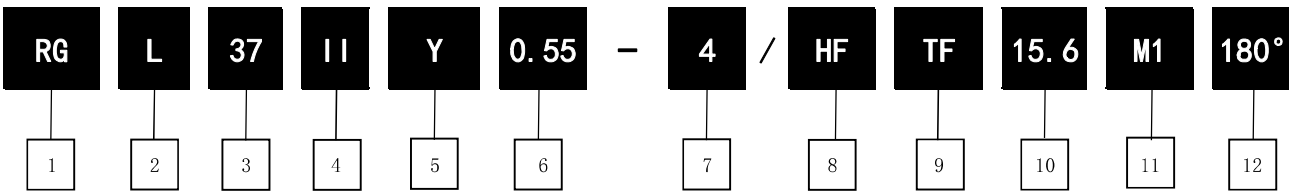
## RG系列减速器结构图/RG series structure drawing



RG

## 机型表示方法

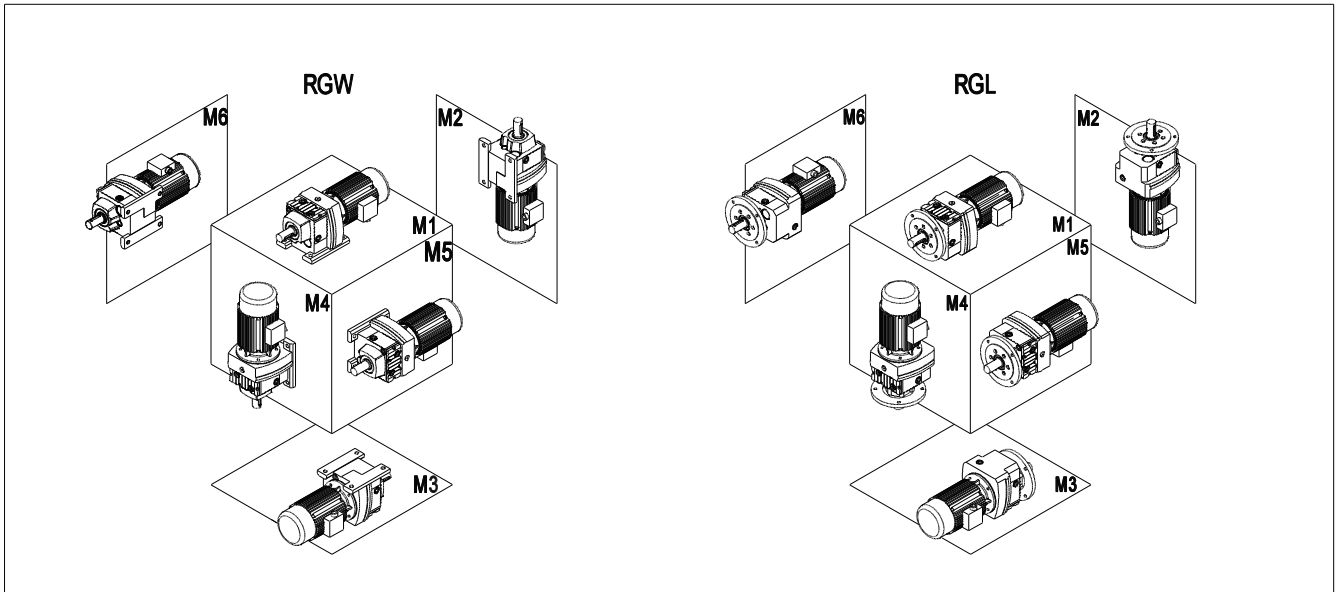
### Model expression



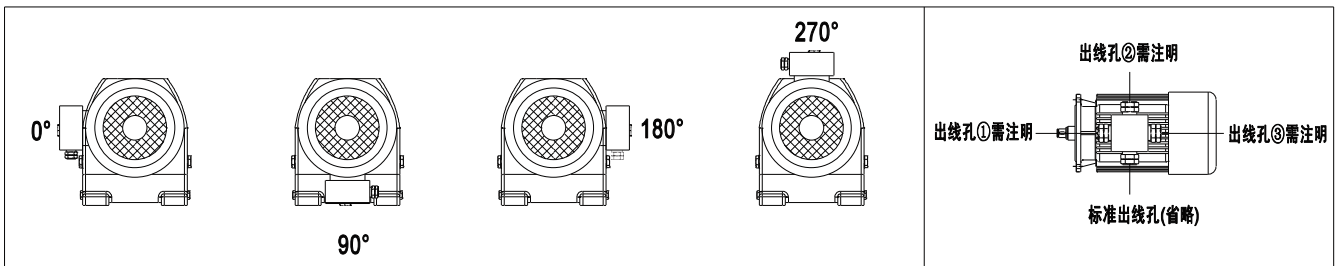
<p><b>1</b> 产品代码</p> <p>RG—斜齿轮减速电机 FG—平行轴斜齿轮减速电机 KG—斜齿—螺旋锥齿轮减速电机 SG—斜齿—蜗轮蜗杆减速电机</p>	<p><b>2</b> 装配型式</p> <p>W—卧式底脚安装 L—立式法兰安装</p>	<p><b>3</b> 减速机型号</p> <p>67—减速机 规格号为67</p>	<p><b>4</b> 法兰盘大小</p> <p>无代码—无法兰， 或只有一种法兰， 或一种以上法兰种最小法兰 II—两种法兰中最大的法兰 III—三种法兰中的中法兰 III—三种法兰中最大的法兰</p>	<p><b>5</b> 电动机</p> <p>Y—三相异步 YEJ—电磁刹车三相异步 YVP—变频调速三相异步 默认 (IP54) F—配电机输入法兰 S—配轴输入</p>
<p><b>6</b> 电动机功率</p> <p>0.55—电机为0.55 KW 单位 KW</p>	<p><b>7</b> 电动机级数</p> <p>2—电动机级数为2 4—电动机级数为4 6—电动机级数为6</p>	<p><b>8</b> 手动释放装置</p> <p>无代码—无手动释放装置 HF—手动释放 锁在制动释放位置 HR手动释放 自动退回制动位置</p>	<p><b>9</b> 电机热保护</p> <p>无代码—无电机热保护装置 TF—电机热保护装置</p>	<p><b>10</b> 减速机传动比</p> <p>15.6—减速机 传动比为15.6</p>
<p><b>11</b> 安装位置</p> <p>M1—安装型式图中 M1位置</p>	<p><b>12</b> 接线盒位置</p> <p>无代码—安装型式 图中0°位置 180°—安装型式 图中180°位置</p>			



## RG 系列减速器安装方位图/RG series installation direction diagram



## RG 系列减速器接线盒及出线孔位置/RG series motor wiring box and hole position



## RG系列减速机油量表/RG series oil capacity table(unit:L)

油量 (L) / 机型号	安装方位	RGW						RGL					
		M1	M2	M3	M4	M5	M6	M1	M2	M3	M4	M5	M6
RG37		0.3	0.9	1	1.1	0.8	1	0.4	0.9	1	1.1	0.8	1
RG47		0.7	1.6	1.5	1.7	1.5	1.5	0.7	1.6	1.5	1.7	1.5	1.5
RG57		0.8	1.9	1.7	2.1	1.7	1.7	0.8	1.8	1.7	2	1.7	1.7
RG67		1.1	2.6	2.8	3.2	1.8	2	1.1	2.7	2.7	3.1	1.9	2.1
RG77		1.2	3.8	3.6	4.3	2.5	3.4	1.2	3.8	3.3	4.1	2.4	3
RG87		2.3	6.7	7.2	7.7	6.3	6.5	2.4	6.8	7.1	7.7	6.3	6.4
RG97		4.6	11.7	11.7	13.4	11.3	11.7	5.1	11.9	11.2	14	11.2	11.8
RG107		6	16.3	16.9	19.2	13.2	15.9	6.3	15.9	17	19.2	13.1	15.9

## RG系列减速机重量表/RG series weight table

机型号/type	RG37	RG47	RG55	RG67	RG77	RG87	RG97	RG107
重量kg/Weight kg	10	15	21	27	35	65	120	165

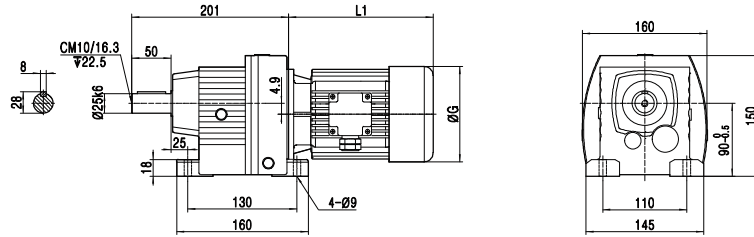
注：表中重量为不加油时重量，带输入轴、输入法兰另加10%；带电机根据所配规格另加。

Note: Inside the table are the weight when oil is not added. Weight should be added with 10% when input shaft and connection flange are furnished; If there is a motor please add weight according to motor type.

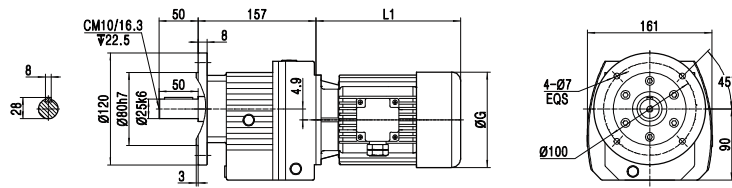


RG37 外形安装尺寸/dimensions:

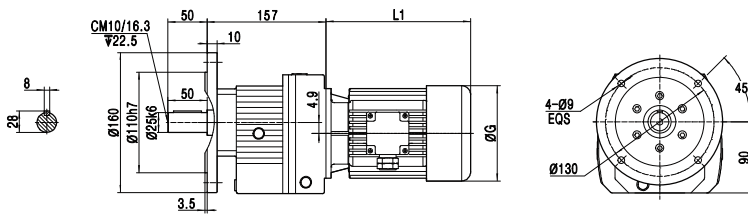
RGW37..



RGL37.. Ø120

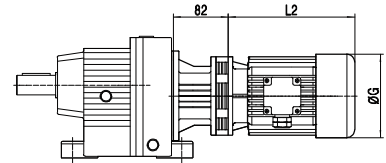


RGL37.. Ø160

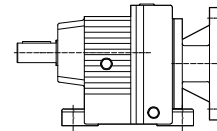


输入方式  
Input mode

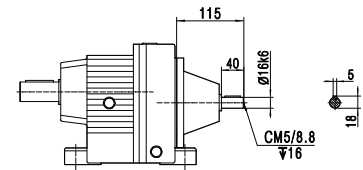
RG..37WB85  
Combined with WB85



RG37..F  
IEC Flange input



RG37..S  
Shaft input



Y2电机机座号 Motor size	56M	63	71	80	90S	90L	100						
功率/4P Power/(kw)	0.09	0.12	0.18	0.25	0.37	0.55	0.75	1.1	1.5	2.2	3.0		
L1	—	250	280	320	342	367	400						
L2	170	190	190	—	—	—	—						
ØG	120	130	145	175	195	195	215						

注: 电机尺寸仅供参考、尺寸 L1 允许变动、选型时请充分考虑安装空间。



RG37 系列传动能力表/RG series drive capacity table

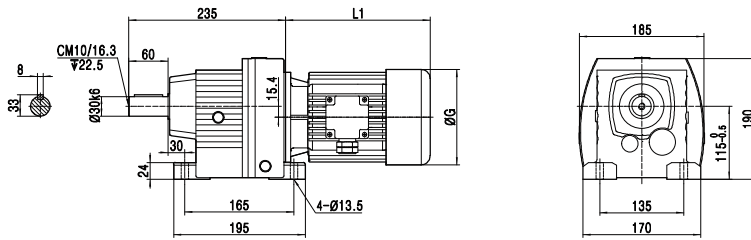
P1	参数代号 Parameter code	RG37 传动能力选型参数表/RG37 series of transmission power parameter form																											
		is 精确传动比/Exact ratio is																											
0.12kw/4P	T2(N·m)	5.00	6.16	6.88	7.71	8.77	10.80	12.06	13.52	15.25	17.33	18.53	21.35	24.93	27.22	33.55	37.44	41.99	50.09	61.73	68.90	77.26	87.14	99.00	105.9	122.0	142.5		
	FB	3.7	4.6	5.1	5.7	6.5	8.0	9.0	10	11	13	14	16	19	20	25	28	31	37	46	51	57	65	74	79	91	106		
0.18kw/4P	T2(N·m)	32	29	26	25	22	19	18	17	16	14	13	9.3	8.6	8.5	7.5	6.7	6.0	5.1	4.1	3.6	3.2	2.9	2.5	2.4	2.1	1.7		
	FB	5.6	6.9	7.7	8.6	10	12	13	15	17	19	21	24	28	31	39	43	49	55	68	76	85	96	109	116	134	157		
0.25kw/4P	T2(N·m)	21	19	17	17	15	13	12	11	11	9.7	9.1	6.2	5.7	5.6	4.8	4.4	3.9	3.3	2.7	2.4	2.1	1.96	1.69	1.59	1.37	1.16		
	FB	7.9	10	11	12	14	17	19	21	24	27	29	34	40	44	54	60	67	77	94	105	118	133	151	155	189	221		
0.37kw/4P	T2(N·m)	15	13	12	12	10	9.3	8.6	8.1	7.7	6.8	6.4	4.4	4.1	4.1	3.6	3.2	2.8	2.4	1.98	1.75	1.56	1.41	1.22	1.14	0.99	0.84		
	FB	12	14	16	18	21	25	28	32	36	41	43	50	59	65	80	89	100	113	139	156	177	200	227					
0.55kw/4P	T2(N·m)	10	9.2	8.4	8.1	7.1	6.3	5.8	5.5	5.2	4.7	4.4	3.0	2.8	2.7	2.4	2.1	1.94	1.65	1.34	1.18	1.05	0.95	0.82					
	FB	17	21	24	27	30	38	42	47	54	61	66	76	89	96	118	132	148	171	210	235								
0.75kw/4P	T2(N·m)	7.1	6.2	5.6	5.4	4.9	4.3	4.0	3.7	3.6	3.1	2.9	2.0	1.89	1.87	1.65	1.47	1.31	1.11	0.90	0.8								
	FB	24	29	33	37	42	52	58	65	74	84	90	103	120	131	156	174	195	233										
1.1kw/4P	T2(N·m)	5.2	4.6	4.2	4.0	3.6	3.1	2.9	2.7	2.6	2.3	2.1	1.49	1.39	1.37	1.21	1.08	0.96	0.81										
	FB	35	43	48	54	61	75	84	94	106	121	129	148	173	185	228													
1.5kw/4P	T2(N·m)	3.5	3.1	2.8	2.7	2.4	2.1	2.0	1.89	1.81	1.59	1.49	1.02	0.95	0.93	0.83													
	FB	47	58	65	73	83	102	114	128	145	164	176																	
2.2kw/4P	T2(N·m)	2.6	2.3	2.1	2.0	1.8	1.59	1.47	1.39	1.33	1.17	1.09																	
	FB	70	86	96	107	122	150	168	188	212	241																		
3.0kw/4P	T2(N·m)	1.8	1.59	1.45	1.4	1.23	1.09	1.0	0.95	0.9	0.8																		
	FB	95	117	131	146	166	205																						
0.18kw/6P	T2(N·m)	1.32	1.17	1.06	1.02	0.90	0.80																						
	FB																												
0.25kw/6P	T2(N·m)																												
	FB																												
n1=1450rpm/4P	n2(rmp)	290	235	211	188	165	134	120	107	95.1	83.7	78.3	67.9	58.2	53.3	43.2	38.7	34.5	28.9	23.5	21.0	18.8	16.6	14.6	13.7	11.9	10.2		
	n2(rmp)																												
Radial Load	F1(N)	890	880	910	1300	1310	1310	1310	1310	1300	1330	1340	1370	1630	585	1380	1420	1480	1500	340	585	600	600	600	600	600	600		
	F2(N)	646	705	850	1460	1480	1530	1545	1595	1700	1770	2030	2180	2630	2800	3500	3850	4040	4200	4200	4200	4200	4200	4200	4200	4200	4200		





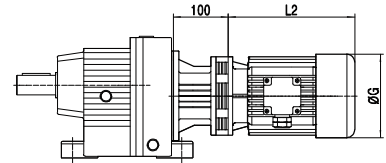
RG47 外形安装尺寸/dimensions:

RGW47..

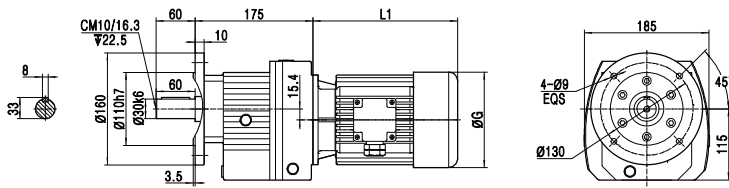


输入方式  
Input mode

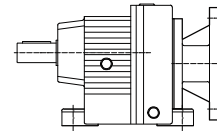
RG..47WB100  
Combined with WB100



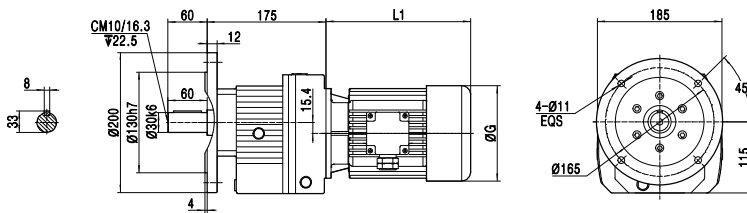
RGL47...Ø160



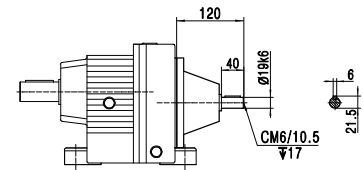
RG47 F  
IIEC Flange input



RGL47..Ø200



RG47..S  
Shaft input



Y2电机机座号 Motor size	63	71	80	90S	90L	100	112				
功率/4P Power/(kw)	0.12	0.18	0.25	0.37	0.55	0.75	1.1	1.5	2.2	3.0	4.0
L1	250	280	320	342	367	400	408				
L2	—	190	190	225	—	—	—				
ØG	130	145	175	195	195	215	240				

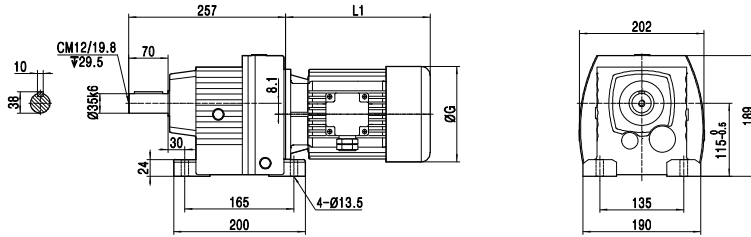
注：电机尺寸仅供参考、尺寸 L1 允许变动、选型时请充分考虑安装空间。



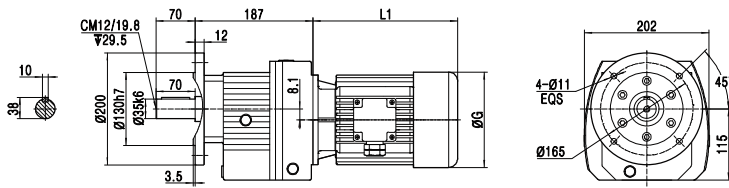


RG57 外形安装尺寸/dimensions:

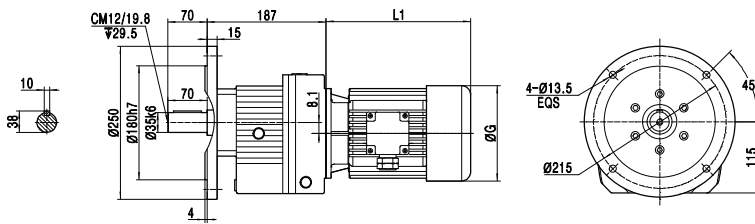
RGW57..



RGL57.. Ø200

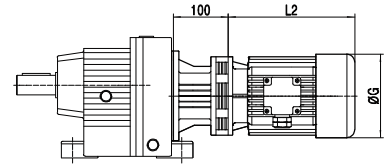


RGL57.. Ø250

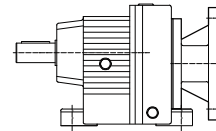


输入方式  
Input mode

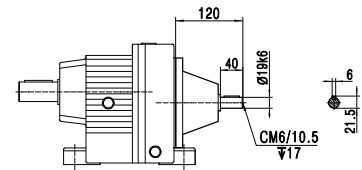
RG..57WB100  
Combined with WB100



RG57..F  
IEEC Flange input



RG57..S  
Shaft input



Y2电机机座号 Motor size	63	71	80	90S	90L	100	112	132S					
功率/4P Power/(kw)	0.18	0.25	0.37	0.55	0.75	1.1	1.5	2.2	3.0	4.0	5.5		
L1	250	280	320	342	367	400	408	473					
L2	190	190	225	—	—	—	—	—					
ØG	130	145	175	195	195	215	240	275					

注: 电机尺寸仅供参考、尺寸 L1 允许变动、选型时请充分考虑安装空间。





### RG57 系列传动能力表/RG series drive capacity table

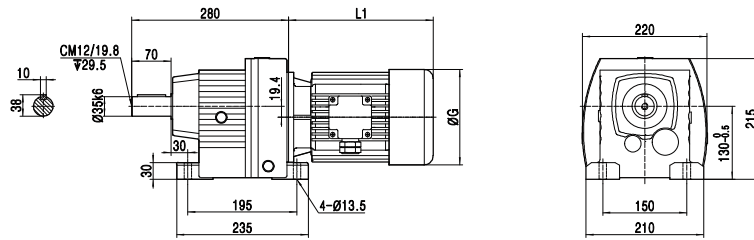
P1		参数代号 Parameter code		RG57 传动能力选型参数表/RG57 series of transmission power parameter form																															
				is精确传动比/Exact ratio is																															
0.18kw/4P	T2(N·m)	5.11	6.10	6.92	7.70	8.60	10.63	12.07	13.42	15.00	16.89	19.11	20.95	24.92	27.69	33.01	37.91	41.73	48.57	54.08	60.59	67.60	74.42	86.61	96.43	108.01	114.71	139.01	160.31	173.11					
	FB																									97	107	120	128	155	179	193			
0.25kw/4P	T2(N·m)																																		
	FB																									94	105	115	134	149	167	177	215	248	268
0.37kw/4P	T2(N·m)																																		
	FB																																		
0.55kw/4P	T2(N·m)																																		
	FB																																		
0.75kw/4P	T2(N·m)																																		
	FB																																		
1.1kw/4P	T2(N·m)																																		
	FB																																		
1.5kw/4P	T2(N·m)																																		
	FB																																		
2.2kw/4P	T2(N·m)																																		
	FB																																		
3.0kw/4P	T2(N·m)																																		
	FB																																		
4.0kw/4P	T2(N·m)																																		
	FB																																		
5.5kw/4P	T2(N·m)																																		
	FB																																		
0.18kw/6P	T2(N·m)																																		
	FB																																		
0.37kw/6P	T2(N·m)																																		
	FB																																		
n1=1450rpm/4P	n2(rmp)																																		
	n2(rmp)																																		
径向载荷 Radial Load	Fr1(N)																																		
	Fr2(N)																																		



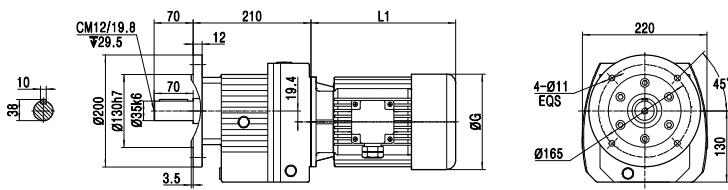


RG67 外形安装尺寸/dimensions:

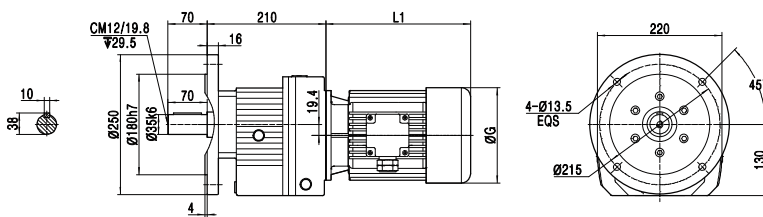
RGW67..



RGL67.. Ø200

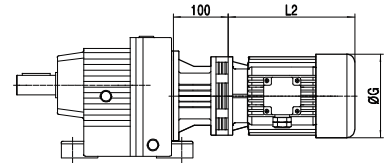


RGL67.. Ø250

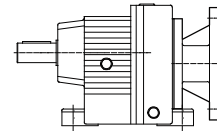


输入方式  
Input mode

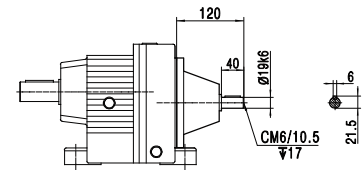
RG..67WB100  
Combined with WB100



RG67..F  
IEC Flange input



RG67..S  
Shaft input



Y2电机机座号 Motor size	63	71	80	90S	90L	100	112	132S	132M			
功率/4P Power/(kw)	0.18	0.25	0.37	0.55	0.75	1.1	1.5	2.2	3.0	4.0	5.5	7.5
L1	250	280	320	342	367	400	408	473	513			
L2	190	190	225	—	—	—	—	—	—			
ØG	130	145	175	195	195	215	240	275	275			

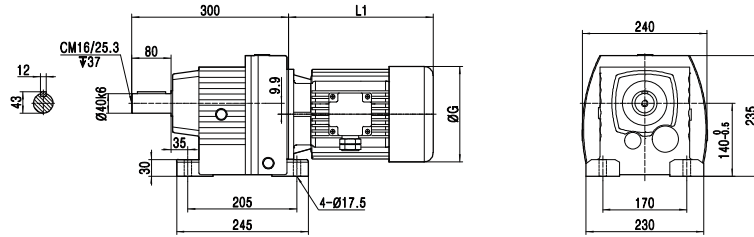
注：电机尺寸仅供参考、尺寸 L1 允许变动、选型时请充分考虑安装空间。



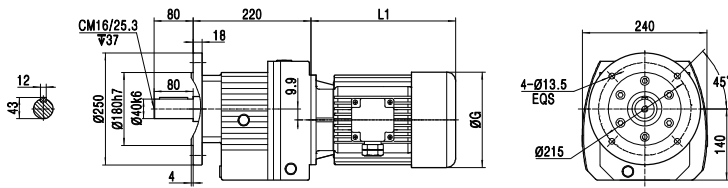


RG77 外形安装尺寸/dimensions:

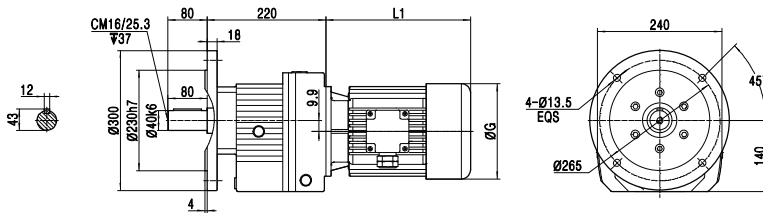
RGW77..



RGL77.. Ø250

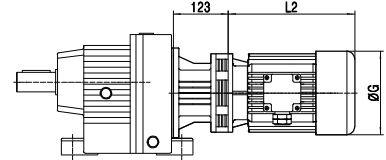


RGL77.. Ø300

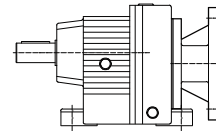


输入方式  
Input mode

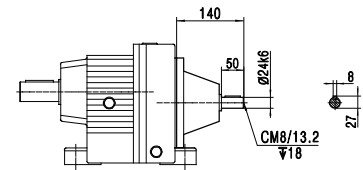
RG..77WB120  
Combined with WB120



RG77..F  
IEC Flange input



RG77..S  
Shaft input



Y2电机机座号 Motor size	71	80	90S	90L	100	112	132S	132M	160M			
功率/4P Power/(kw)	0.25	0.37	0.55	0.75	1.1	1.5	2.2	3.0	4.0	5.5	7.5	11
L1	280	320	342	367	400	408	473	513	560			
L2	190	225	260	285	—	—	—	—	—			
ØG	145	175	195	195	215	240	275	275	330			

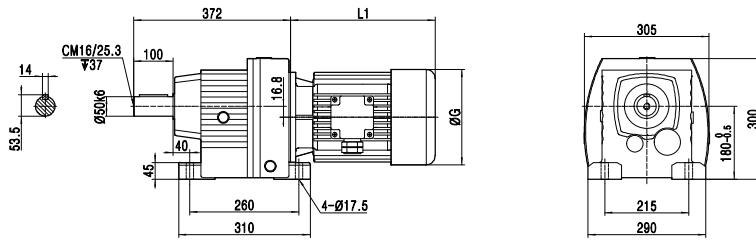
注：电机尺寸仅供参考、尺寸 L1 允许变动、选型时请充分考虑安装空间。



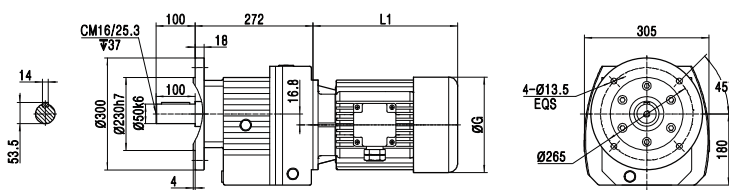


RG87 外形安装尺寸/dimensions:

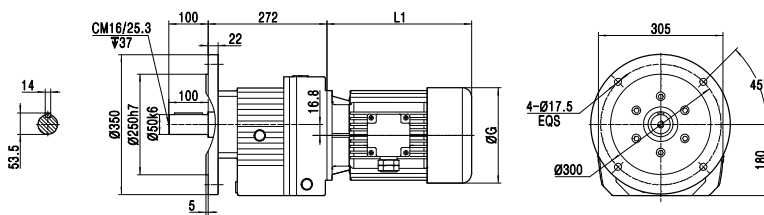
RGW87..



RGL87.. Ø300

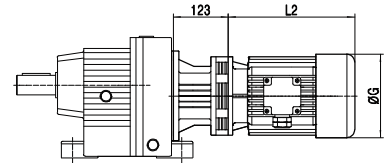


RGL87.. Ø350

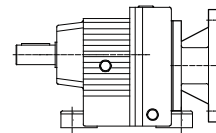


输入方式  
Input mode

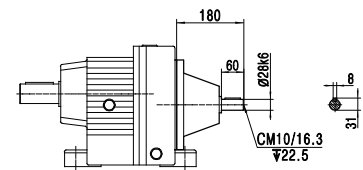
RG..87WB120  
Combined with WB120



RG87..F  
IIEC Flange input



RG87..S  
Shaft input



Y2电机机座号 Motor size	71	80	90S	90L	100	112	132S	132M	160M	160L	180M			
功率/4P Power/(kw)	0.25	0.37	0.55	0.75	1.1	1.5	2.2	3.0	4.0	5.5	7.5	11	15	18.5
L1	—	280	320	342	367	400	408	473	513	560	615	645		
L2	190	225	260	285	—	—	—	—	—	—	—			
ØG	145	175	195	195	215	240	275	275	330	330	380			

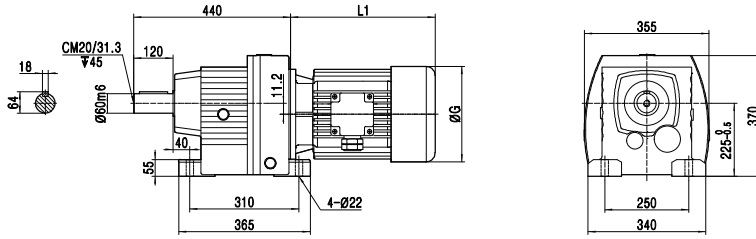
注：电机尺寸仅供参考、尺寸 L1 允许变动、选型时请充分考虑安装空间。



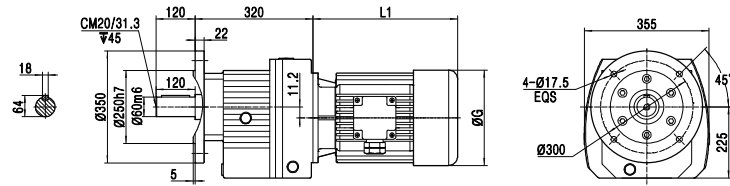


RG97 外形安装尺寸/dimensions:

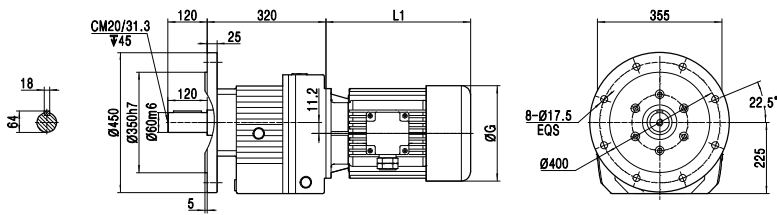
RGW97..



RGL97.. Ø350

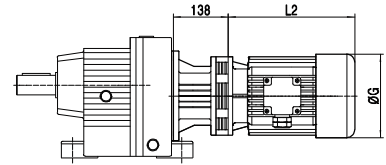


RGL97.. Ø450

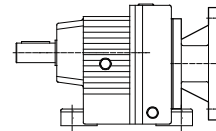


输入方式  
Input mode

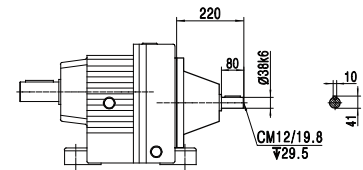
RG..97WB150  
Combined with WB150



RG97..F  
IEEC Flange input



RG97..S  
Shaft input



Y2电机机座号 Motor size	80	90S	90L	100	112	132S	132M	160M	160L	180M	180L	200L	225S			
功率/4P Power/(kw)	0.55	0.75	1.1	1.5	2.2	3.0	4.0	5.5	7.5	11	15	18.5	22	30	37	
L1	320	342	367	400	408	473	513	560	615	645	675	710	724			
L2	225	260	285	—	—	—	—	—	—	—	—	—	—			
ØG	175	195	195	215	240	275	275	330	330	380	380	420	450			

注：电机尺寸仅供参考、尺寸 L1 允许变动、选型时请充分考虑安装空间。

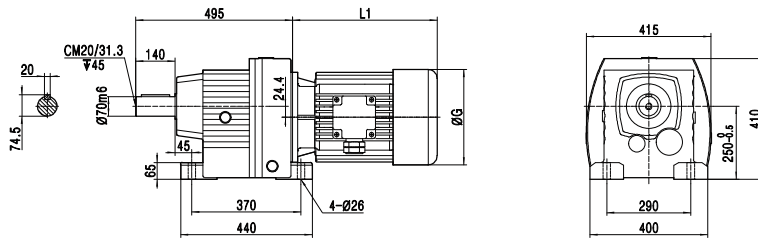




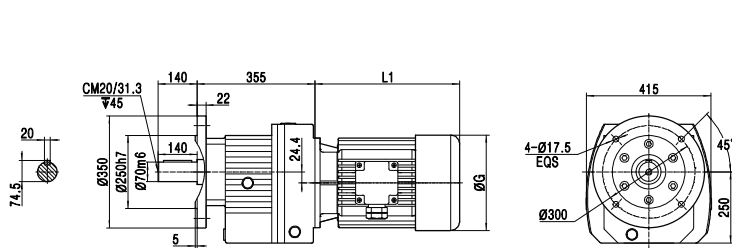


RG107 外形安装尺寸/dimensions:

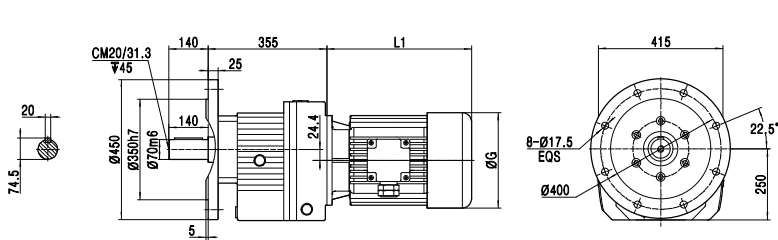
RGW107..



RGL107.. Ø350

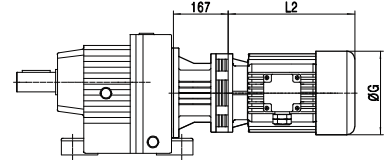


RGL107.. Ø450

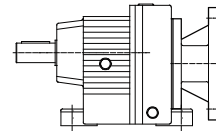


输入方式  
Input mode

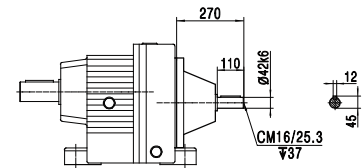
RG..107X4  
Combined with X4



RG107..F  
IEEC Flange input



RG107..S  
Shaft input



Y2电机机座号 Motor size	80	90S	90L	100	112	132S	132M	160M	160L	180M	180L	200L	225S	225M				
功率/4P Power/(kw)	0.55	0.75	1.1	1.5	2.2	3.0	4.0	5.5	7.5	11	15	18.5	22	30	37	45		
L1	—	342	367	400	408	473	513	560	615	645	675	710	724	754				
L2	280	315	315	350	350	—	—	—	—	—	—	—	—	—				
ØG	175	195	195	215	240	275	275	330	330	380	380	420	450	450				

注：电机尺寸仅供参考、尺寸 L1 允许变动、选型时请充分考虑安装空间。





*Note:*

RG